
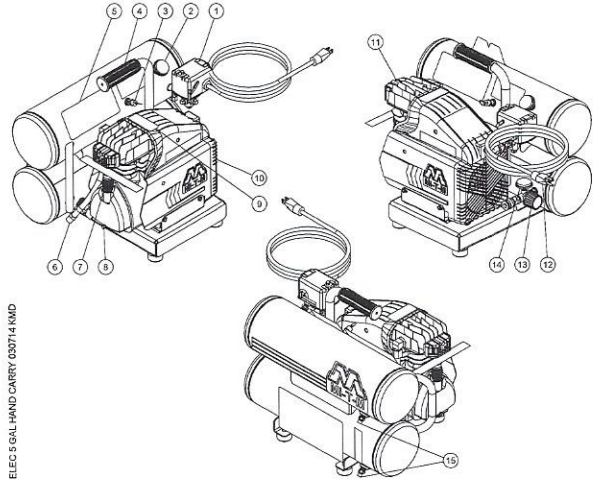


**IMPORTANT SAFETY INSTRUCTIONS**  
 READ ALL SAFETY WARNINGS BEFORE USING AIR COMPRESSOR

HAZARD	POTENTIAL CONSEQUENCE	PREVENTION
<b>RISK FROM MOVING PARTS</b> 	Risk of bodily injury from moving parts. This air compressor cycles automatically when the pressure switch is in the "On/Auto" position.	Before performing maintenance, always turn off air compressor. Bleed pressure from the air hose and the tank, and unplug electrical cord from outlet. All repairs to the air compressor should be made by an Authorized Service person. Never assume the air compressor is safe to work on just because it is not operating. It could restart at any time.  Do not operate without protective covers/guards. Always unplug the air compressor before removing any guard. Replace damaged covers/guards before using the air compressor.
<b>RISK FROM NEGLIGENCE</b>	Risk of injury from negligent use.	Never allow children or adolescents to operate this air compressor!  Stay alert-watch what you are doing. Do not operate the air compressor when fatigued or under the influence of alcohol or drugs.  Know how to stop the air compressor. Be thoroughly familiar with controls.
<b>RISK OF AIR COMPRESSOR DAMAGE</b>	Risk of major repair.	Do not operate air compressor without an air filter.  Do not operate air compressor in a corrosive environment.  Always operate the air compressor in a stable, secure position to prevent air compressor from falling.  Follow all maintenance instructions listed in this manual.

**SAVE THESE INSTRUCTIONS!**

**ELECTRIC AIR COMPRESSOR FEATURES**



ELEC 5 GAL HAND CARRY 030714 KMD

1. PRESSURE SWITCH
2. TANK PRESSURE GAUGE
3. SAFETY RELIEF VALVE
4. PICKUP HANDLE
5. DECAL - OPERATING INSTRUCTION
6. PUMP DISCHARGE LINE
7. OIL DIPSTICK
8. PUMP OIL DRAIN
9. DECAL - WARNING RISK OF BURNS
10. PROTECTIVE COVER
11. AIR INTAKE FILTER
12. ELECTRIC POWER CORD
13. PRESSURE REGULATOR
14. OUTLET PRESSURE GAUGE
15. AIR TANK DRAIN VALVE

**AIR COMPRESSOR FEATURES**



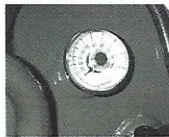
**PRESSURE SWITCH:** The switch is used to start or stop the air compressor. Moving the switch to the "Auto" (ON) position will allow the pressure switch to start the motor when the air tank pressure is below the factory set "cut-in" pressure. When in the "Auto" position, the pressure switch stops the motor when the air tank pressure reaches the factory set "cut-out" pressure. This switch also has a pressure release valve located on the side of the switch designed to automatically release compressed air from the air compressor pump head and its discharge line when the air compressor reaches "cut-out" pressure or is shut off. This allows the motor to restart freely. Moving the switch to the "OFF" position will open the pressure switch contacts and stop the air compressor.



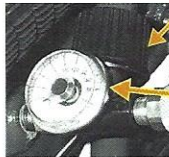
**MOTOR THERMAL OVERLOAD:** The electric motor has a manual thermal overload protector. If the motor overheats for any reason, the thermal overload will cut off power to prevent the motor from being damaged. Turn pressure switch lever to the "OFF" position and wait until the motor is cool. Press the thermal overload button to reset it and begin working again.



**AIR INTAKE FILTER:** This filter is designed to clean air coming into the pump. To ensure the pump continually receives a clean, cool, dry air supply this filter must always be clean and ventilation opening free from obstructions. Replace filter element when necessary.



**TANK PRESSURE GAUGE:** The tank pressure gauge indicates the air pressure in the air tank.



**PRESSURE REGULATOR:** The air pressure coming from the air tank is controlled by the regulator knob. Turn the pressure regulation knob clockwise to increase discharge pressure, and counterclockwise to decrease discharge pressure.

**OUTLET PRESSURE GAUGE:** The outlet pressure gauge indicates the air pressure available at the outlet side of the regulator. This pressure is controlled by the regulator and is always less or equal to the air tank pressure.

**AIR COMPRESSOR FEATURES**



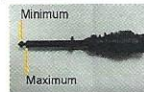
**AIR TANK DRAIN VALVE:** The drain valve is used to remove moisture from the air tank after the air compressor is shut off. **NEVER attempt to open the drain valve when more than 10 PSI of air pressure is in the air tank!** To open the drain valve, turn the knob counterclockwise. Keep the air compressor in such a position that all water condensation will flow out.



**SAFETY RELIEF VALVE:** This valve is designed to prevent system failures by relieving pressure from the system when the compressed air reaches a predetermined level. The valve is preset by the manufacturer and must not be modified in any way. To verify the valve is working properly, pull on the ring. Air pressure should escape. When the ring is released, it will reset.



**TANK CHECK VALVE:** This valve prevents the compressed air in the tank from re-entering the pump discharge line.



**OIL DIPSTICK:** The dipstick will indicate the amount of oil in the pump. Oil level should be checked on a daily basis to ensure it does not exceed the maximum notch or fall below the minimum notch on the dipstick.



**PUMP OIL DRAIN:** The removal of the drain plug will allow the air compressor lubricants to be changed. To remove drain plug, turn counterclockwise.

**AIR COMPRESSOR PUMP:** To compress air, the piston moves up and down in the cylinder. On the downstroke, air is drawn in through the air intake valve while the exhaust valve remains closed. On the upstroke, the intake valve closes, air is compressed and forced out through the exhaust valve, into the discharge line, through the tank check valve and into the air tank.

It is recommended this air compressor not be operated at more than a 50% duty cycle. This means an air compressor that pumps air longer than 50% of one hour is considered misuse. Maximum air compressor pumping time per hour is 30 minutes.

## INTRODUCTION

Congratulations on the purchase of your new Mi-T-M® Air Compressor! You can be assured your Mi-T-M® Air Compressor was constructed with the highest level of precision and accuracy. Each component has been rigorously tested by technicians to ensure the quality, endurance and performance of this air compressor.

This operator's manual was compiled for your benefit. By reading and following the simple safety, installation and operation, maintenance and troubleshooting steps described in this manual, you will receive years of trouble-free operation from your new Mi-T-M® Air Compressor. The contents of this manual are based on the latest product information available at the time of publication. The manufacturer reserves the right to make changes in price, color, materials equipment, specifications or models at any time without notice.

### IMPORTANT!

A "DANGER, WARNING or CAUTION" safety warning will be surrounded by a "SAFETY ALERT BOX". This box is used to designate and emphasize Safety Warnings that must be followed when operating this air compressor. Accompanying the safety warnings are "Signal Words" which designate the degree or level of hazard seriousness. The "Signal Words" used in this manual are as follows:

- DANGER:** Indicates an imminently hazardous situation which, if not avoided, WILL result in death or serious injury.
- WARNING:** Indicates a potentially hazardous situation which, if not avoided, COULD result in death or serious injury.
- CAUTION:** Indicates a potentially hazardous situation which, if not avoided MAY result in minor or moderate injury or damage to the air compressor.
- The symbols set to the left of this paragraph are "Safety Alert Symbols". These symbols are used to call attention to items or procedures that could be dangerous to you or other persons using this equipment.

**ALWAYS PROVIDE A COPY OF THIS MANUAL TO ANYONE USING THIS EQUIPMENT. READ ALL INSTRUCTIONS IN THIS MANUAL AND ANY INSTRUCTIONS SUPPLIED BY MANUFACTURERS OF SUPPORTING EQUIPMENT BEFORE OPERATING THIS AIR COMPRESSOR AND ESPECIALLY POINT OUT THE "SAFETY WARNINGS" TO PREVENT THE POSSIBILITY OF PERSONAL INJURY TO THE OPERATOR.**

Once the unit has been removed from the box, immediately write in the serial number of your unit in the space provided below.

SERIAL NUMBER \_\_\_\_\_

Inspect for signs of obvious or concealed freight damage. If damage does exist, file a claim with the transportation company immediately. Be sure that all damaged parts are replaced and the mechanical and electrical problems are corrected prior to operation of the unit. If you require service, contact your Mi-T-M® Customer Service Representative.


Mi-T-M® Corporation, 8650 Enterprise Drive, Peosta, IA 52068  
1-800-553-9053 / Fax 563-556-1235  
Monday - Friday 8:00 a.m. - 5:00 p.m. CST

Please have the following information available for all service calls:

1. Model Number
2. Serial Number
3. Date and Place of Purchase




## IMPORTANT SAFETY INSTRUCTIONS

WARNING: When using this product, basic precautions should always be observed, including the following. READ ALL SAFETY INSTRUCTIONS BEFORE USING AIR COMPRESSOR

HAZARD	POTENTIAL CONSEQUENCE	PREVENTION
<b>RISK OF ELECTRIC SHOCK OR ELECTROCUTION</b> 	<p>Serious injury or death could occur if the air compressor is not properly grounded. Your air compressor is powered by electricity and may cause electric shock or electrocution if not used properly.</p> <p>Electrical shock may occur from electrical cord.</p> <p>Electrical shock may occur if air compressor is not operated properly.</p> <p>Serious injury or death may occur if electrical repairs are attempted by unqualified persons.</p>	<p>Make sure the air compressor is plugged into a properly grounded outlet which provides correct voltage and adequate fuse protection. Disconnect when not in use.</p> <p>Check power cord for signs of crushing, cutting or heat damage. Replace faulty cord before use.</p> <p>Keep all connections dry and off the ground. Do not allow electrical cords to lay in water or in such a position where water could come in contact with them. Do not touch plug with wet hands.</p> <p>Do not pull on the electrical cord to disconnect from the outlet.</p> <p>Never operate air compressor in wet conditions or outdoors when it is raining.</p> <p>Never operate air compressor with safety guards removed or damaged.</p> <p>Any electrical wiring or repairs performed on this air compressor should be done by Authorized Service Personnel in accordance with National and Local electrical codes.</p> <p>Before opening any electrical enclosure, always shut off the air compressor, relieve pressure and unplug the air compressor from the power source. Allow air compressor to cool down. Never assume the air compressor is safe to work on just because it is not operating. It could restart at any time! Service in a clean, dry, flat area.</p>

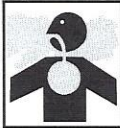


## IMPORTANT SAFETY INSTRUCTIONS

READ ALL SAFETY WARNINGS BEFORE USING AIR COMPRESSOR

HAZARD	POTENTIAL CONSEQUENCE	PREVENTION
<b>RISK OF EXPLOSION OR FIRE</b>  	<p>Serious injury or death may occur from normal electrical sparks in the motor and pressure switch.</p> <p>Serious injury may occur if any air compressor ventilation openings are restricted, causing the air compressor to overheat and start a fire.</p>	<p>Always operate air compressor in a well ventilated area free of flammable vapors, combustible dust, gases or other combustible materials.</p> <p>DO NOT SMOKE if spraying flammable material. Locate the air compressor at least 20 feet away from the spray area. (An additional hose may be required.)</p> <p>Never place objects against or on top of the air compressor. Operate the air compressor at least 12 inches away from any wall or obstruction that would restrict proper ventilation.</p>
<b>RISK OF BURSTING</b> 	<p>Serious injury or death may occur from an air tank explosion if air tanks are not properly maintained.</p>	<p>Drain the air tank daily or after each use to prevent moisture buildup in the air tank.</p> <p>If the air tank develops a leak, replace the air tank immediately. Never repair, weld or make modifications to the air tank or its attachments. Use only genuine Mi-T-M® repair parts for your air compressor.</p> <p>Never make adjustments to the factory set pressures.</p> <p>Never exceed manufacturers maximum allowable pressure rating of attachments.</p> <p>Because of extreme heat, do not use plastic pipe or lead tin soldered joints for a discharge line.</p> <p>Never use air compressor to inflate small, low pressure objects such as toys.</p>
	<p>Exceeding the pressure rating of air tools, spray guns, air operated accessories, tires and other inflatables can cause them to explode or fly apart, and could result in serious injury.</p>	

## IMPORTANT SAFETY INSTRUCTIONS

READ ALL SAFETY WARNINGS BEFORE USING AIR COMPRESSOR

HAZARD	POTENTIAL CONSEQUENCE	PREVENTION
<b>RISK TO BREATHING</b> 	<p>Serious injury or death could occur from inhaling compressed air. The air stream may contain carbon monoxide, toxic vapors or solid particles.</p> <p>Sprayed materials such as paint, paint solvents, paint remover, insecticides, weed killers, etc. contain harmful vapors and poisons.</p>	<p>Never inhale air from the air compressor either directly or from a breathing device connected to the air compressor.</p> <p>Operate air compressor only in a well ventilated area. Follow all safety instructions provided with the materials you are spraying. Use of a respirator may be required when working with some materials.</p>
<b>RISK OF BURNS</b> 	<p>Serious injury could occur from touching exposed metal parts. These areas can remain hot for some time after the air compressor is shutdown.</p>	<p>Never allow any part of your body or other materials to make contact with any exposed metal parts on the air compressor.</p>
<b>RISK OF FLYING OBJECTS</b> 	<p>Soft tissue damage can occur from the compressed air stream.</p> <p>Serious injury can occur from loose debris being propelled at a high speed from the compressed air stream.</p>	<p>Always wear safety glasses to shield the eyes from flying debris.</p> <p>Never point the air stream at any part of your body, anyone else or animals.</p> <p>Never leave pressurized air in the air compressor. Shut off air compressor and relieve pressure when storing or attempting maintenance.</p> <p>Always maintain a safe distance from people and animals while operating the air compressor.</p> <p>Do not attempt to move the air compressor by pulling on the hose.</p>



## WARNING

THE FOLLOWING PAGES CONTAIN OPERATING AND MAINTENANCE INSTRUCTIONS.

DO NOT ATTEMPT TO OPERATE THIS AIR COMPRESSOR UNTIL YOU HAVE **READ AND UNDERSTOOD** ALL SAFETY PRECAUTIONS AND INSTRUCTIONS LISTED IN THIS MANUAL.

INCORRECT OPERATION OF THIS UNIT CAN CAUSE SERIOUS INJURY!!

DO NOT ALTER OR MODIFY THIS EQUIPMENT IN ANY MANNER!

### OPERATING INSTRUCTIONS

#### PRE-START CHECKLIST:

1. Check oil level, add if necessary.
2. Remove any moisture in the air compressor air tank. **NEVER attempt to open the Air Tank Drain Valve when more than 10 PSI of air pressure is in the air tank!** Remove excessive pressure with an air tool, then open the air tank drain valve in the bottom of the air tank. Close tightly when drained.
3. Make sure the pressure switch is in the "OFF" position.
4. Make sure the safety relief valve is working correctly.
5. Make sure all guards and covers are in place and securely mounted.

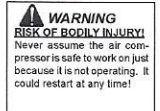


#### START-UP:

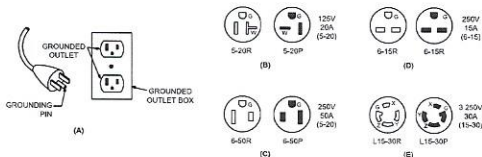
1. Read safety warnings before performing operation.
2. Ensure the pressure switch lever is in the "OFF" position.
3. Plug the power cord into a grounded outlet.
4. Move the lever on the pressure switch box to the "ON" position. This will allow the air compressor to start building up pressure in the air tanks. You will hear an air leak for the first 20-50 seconds until the easy start valve closes. This will stop when correct pressure is achieved. When pressure drops with usage, the air compressor will start automatically.
5. Set pressure by adjusting the pressure regulator knob counterclockwise for less pressure and clockwise for more pressure.
6. If you notice any unusual noise or vibration, stop the air compressor and refer to "Troubleshooting".

#### SHUTDOWN:

1. To stop the air compressor, move the lever on the pressure switch box to the "OFF" position. Never stop the air compressor by unplugging it from the power source. This could result in risk of electrocution or damage to unit.
2. Drain air from the air tanks by releasing air with an attached air tool or by pulling on the safety relief valve test ring.
3. Once the air tank pressure gauge registers under 10 pounds, open the air tank drain valve under each air tank to drain any moisture.
4. Allow the air compressor to cool down.
5. Wipe the air compressor clean and store in a safe, non-freezing area with the cord coiled up and protected from accidental damage.



#### EXAMPLES OF POSSIBLE CORD PLUGS AND CORRESPONDING RECEPTACLE



### PREPARATION INSTRUCTIONS

#### INITIAL SET-UP:

1. Remove the air compressor from the carton.
2. Read safety warnings before setting-up air compressor.
3. Remove the oil travel plug in the crankcase cover and insert the oil dipstick. Ensure the oil level in the air compressor pump is adequate. If low, add SAE non-detergent oil as recommended below:  
**Ambient Temperature SAE Viscosity**  
0-32°F SAE 10W  
32-80°F SAE 20W  
60-103°F SAE 30W

#### LOCATION:

1. In order to avoid damaging an oil lubed air compressor, do not incline the air compressor transversely or longitudinally more than 10°.
2. Place air compressor at least 12 inches away from obstacles that may prevent proper ventilation. Do not place air compressor in an area:
  - where there is evidence of oil or gas leaks.
  - where flammable gas vapors or materials may be present.
  - where air temperatures fall below 32°F or exceed 104°F.
  - where extremely dirty air or water could be drawn into the air compressor.

#### ELECTRICAL:

1. USE OF AN EXTENSION CORD IS NOT RECOMMENDED because it could cause the compressor motor to overheat. It's recommended to use additional air hose instead of an extension cord.
2. If use of an extension cord is unavoidable, it should be plugged into a GFCI found in circuit boxes or protected receptacles. When using an extension cord, observe the following:

Ampere Rating Range	Voltage	Length of cord in ft					
		25 ft	50 ft	100 ft	150 ft	200 ft	250 ft
8 - 10	120V	18	14	12	10	8	8
	240V	50 ft	100 ft	200 ft	300 ft	400 ft	500 ft
10 - 12	120V	16	14	10	8	8	6
12 - 14	120V	16	12	10	8	6	6
14 - 16	120V	16	12	10	8	6	6
16 - 18	120V	14	12	8	8	6	4
18 - 20	120V	14	12	8	6	6	4

3. Use only a 3-wire extension cord that has a 3-blade grounding plug and a 3-slot receptacle that will accept the plug on the compressor.
4. Examine power cord before using. Do not use the compressor if the cord is damaged. Do not use a damaged extension cord.
5. Keep cords away from heat and sharp edges. Do not pull on a cord to disconnect a plug - grasp the plug.
6. Always shut off the compressor pressure switch before unplugging the compressor.

